

## Series W Gearboxes : Installation and Maintenance

Satisfactory performance depends on proper installation, lubrication and maintenance. All instructions given in the installation leaflet must be followed carefully.

### SHAFT MOUNTING

Ensure that the shaft on to which the gear unit is to be mounted and the gear unit bore are clean and free from burrs.

Liberal smear the shaft and bore with lubricants to aid assembly and prevent fretting corrosion. Slide the unit on to the driven shaft. Fit side fitting key. DO NOT USE TAPER OR TOP FITTING KEY.

### FOOT MOUNTING

Mount the unit securely to a rigid structure. Fit the output extension shaft as required. Use flexible couplings such as Fenaflex for shaft to shaft connections and ensure that shaft misalignment is within the coupling's capacity. When a pulley or sprocket is fitted to either shaft, mount it as close as possible to the gearcase.

When fitting or removing drive components do not hammer on shaft as this will damage the bearings, Fenner Taper Lock bushes permit easy fixing and dismantling without undue force.

### LUBRICATION CAPACITY

Unit Size	All Positions	Mounting Position	Lubrication Capacity	
			749	750
740	0.02	B3	4.5	7.0
741	0.04	B8	3.3	5.1
742	0.08	B6-B7	3.5	5.4
743	0.15	V5	4.5	7.0
744	0.30	V6	3.3	5.1
745	0.55			
746	1.00			
747	1.60			

### LUBRICATION

Sizes 740 to 746 are pre-filled with IP TELIUM VSF 320 a synthetic gear oil suitable for permanent lubrication. They can be mounted in any position. Sizes 745, 746 & 747 should not be installed in the V5 or V6 position without prior consultation.

The synthetic oil used is suitable for ambient temperatures between -25°C and +50°C.

Sizes 747 - 749 are pre-filled for mounting position B3 with IP MELLANA OIL 220, a mineral based gear oil.

Other mounting positions must be specified on order. The Mineral oil used is suitable to operate in ambient temperatures between -15°C and +25°C

### HELICAL-WORM GEAR UNIT

The helical modules are supplied as a sealed for life unit complete with a long-life synthetic oil, AGIP TELIUM VSF320 and can be mounted in all positions.

The lubrication is separate from that of the worm gear unit.

### BREATHERS/MOUNTING POSITIONS

Sizes 740 to 746 are supplied for operation without breathers, level & drain plugs.

Sizes 747 - 749 are supplied for operation with a breather but are dispatched with a closed transport plug. When the unit is in its operating position it is essential to replace the transport plug with the breather plug (supplied) in the position indicated on the installation leaflet prior to operating the unit.

### MAINTENANCE

The high quality of Series W ensures that the unit will operate correctly with only the minimum amount of maintenance. Periodically check that the exterior of the assembly is clean, especially the cooling areas; periodically check for any oil leaks especially around the oil seals.

Sizes 740 to 746 are lubricated for life and do not require any special maintenance other than stated above.

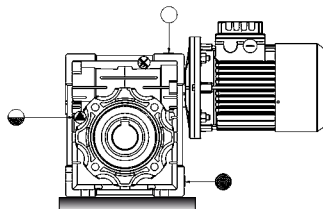
Sizes 747 to 749 will require an oil change between 8,000-10,000 hours of use depending on the type of environment and use. Make sure the breather hole in the plug is clean and using the oil window, check for sufficient lubricant. Should it be necessary to top up the lubricant use the same type that is already in the unit or one that is compatible with it. If in doubt we recommend you empty the oil from the gearbox completely and before refilling with new oil, wash out the unit to remove any residue.

### RECOMMENDED TYPES

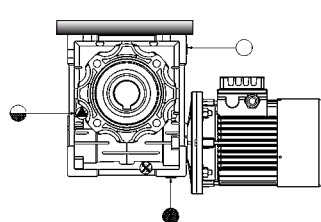
Supplier	Synthetic Oil Operation Temp °C	Mineral Oil Operating Temp °C	
	-25°C to +50°C	-5°C to +40°C	-15°C to +25°C
AGIP	TELIUM VSF 320	BLASIA 460	BLASIA 220
BP	ENERGOL SG-XP320	ENERGOL GR-XP 460	ENERGOL GR-XP 220
CASTROL	ALPHASYN PG320	ALPHA MAX 460	ALPHA MAX 220
ESSO	S220	SPARTAN EP 460	SPARTAN EP 220
MOBIL	GLYGOYLE 30	MOBILGEAR 634	MOBILGEAR 630
OKS	-	-	OKS 3725
SHELL	TIVELA OIL SC320	OMALA OIL 460	OMALA OIL 220

### MOUNTING POSITIONS

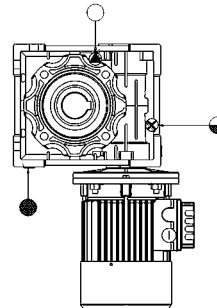
Standard Floor Mounting (B3)



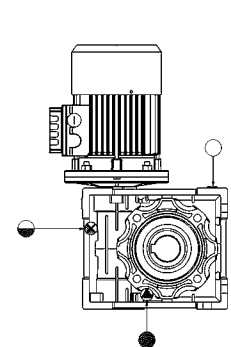
Ceiling Mounted (B8)



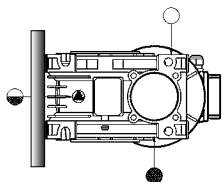
Wall Mounting Input (V6)



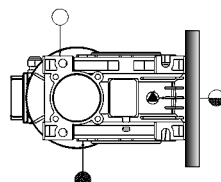
Wall Mounting Input (V5)



Left Hand Wall Mounting (B6)



Right Hand Wall Mounting (B7)



- Ventilator/Filling Position
- Level Position
- Drain Position